



# Proclear<sup>®</sup>



CooperVision<sup>®</sup>



PC TECHNOLOGY™  
(Phosphorylcholine)

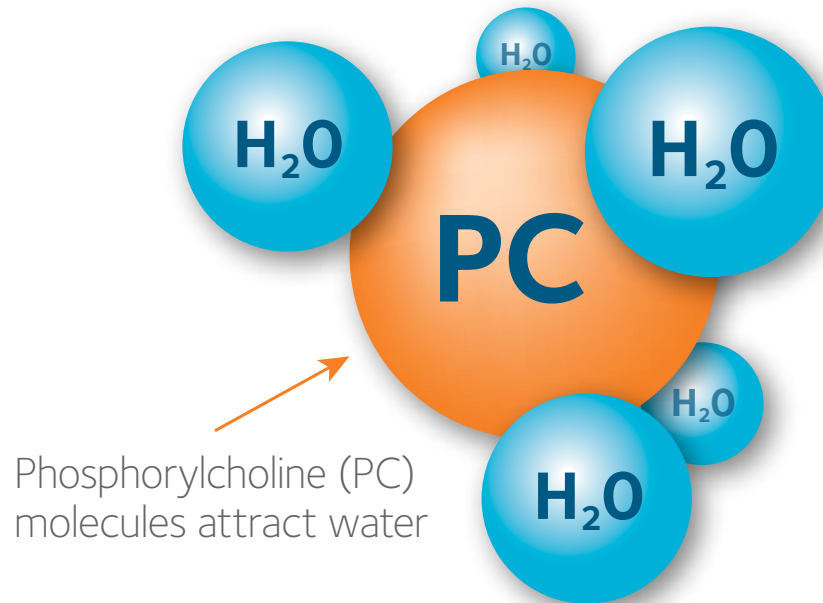


CooperVision®

# Lens Material

The only 1 day lens with an FDA-cleared indication:

“ May provide improved comfort for contact lens wearers who experience mild discomfort or symptoms related to dryness during lens wear ”

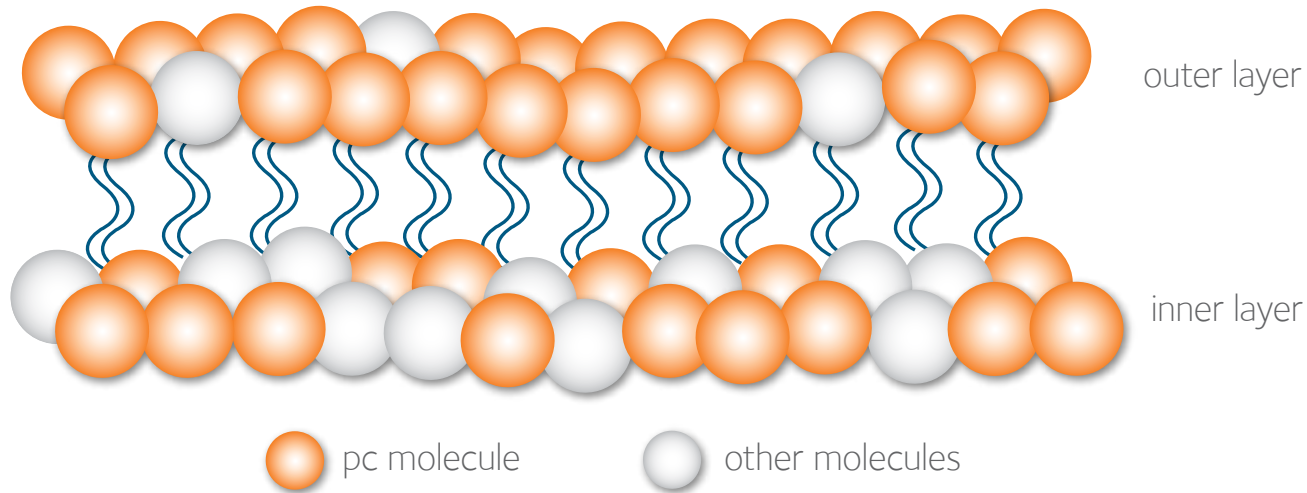


# Biocompatibility

Proclear 1 day lenses use exclusive PC Technology™ which imitates substances found naturally in human eye.

It is not an additive, coating or surface treatment and it locks in natural moisture for a fresh, hydrated lens wearing experience.

## PC in a human cell membrane

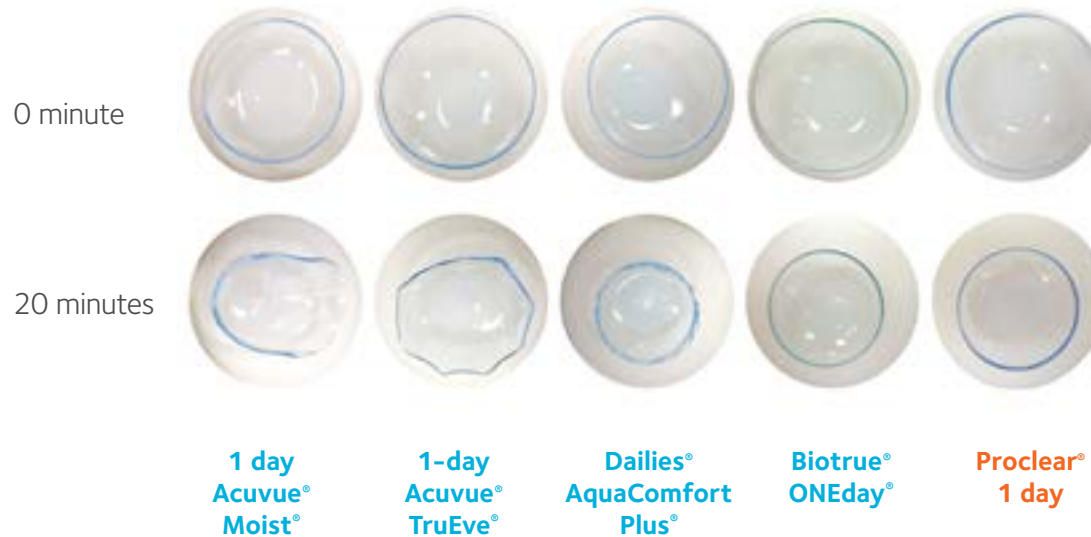


# Long-Lasting Hydration

The image below shows lens shape dynamics during an off-eye dehydration test. Other lenses showed changes in their shape and edge and greater changes in diameter after 20 minutes dehydration in vitro versus Proclear lenses.

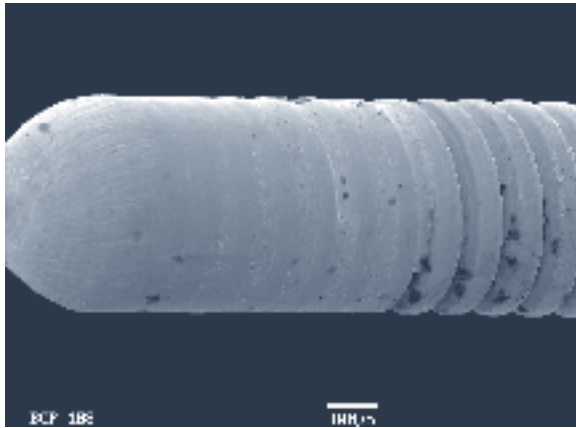
Test Conditions: 20 minutes in air at 22°C 43 1% relative humidity  
Power: -3.00

## Lens Shape Dynamics During Off-Eye Dehydration Test

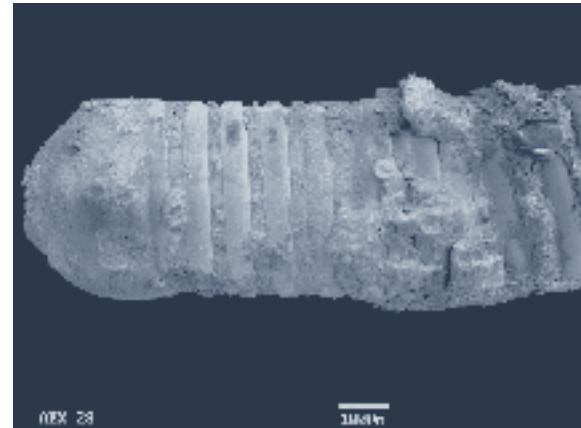


**Phosphorylcholine replicates nature to excel at hydration.**

**It is also utilized in a number of medical devices,  
including guidewires and stents used in cardiology.**



PC-coated guidewire after a  
108 minute coronary procedure.  
Note clot-free surface.



Non-PC-coated guidewire after  
a 28 minute coronary procedure.

# Proclear® 1 day

Natural Avoidance of Dehydration.

PC Technology allows the eye's natural tear film to stay intact.

## Long Lasting Hydration

Proclear® 1 day lenses retain up to 96% of their original water content, even after 12 hours of wear.

## Oxygen Flow

Sustains oxygen flow.

## Dry Spots

Reduces dry spots on lens.

## Deposits

Resists deposits reducing risk of eye infection.





Proclear<sup>®</sup> 1 day  
sphere



CooperVision<sup>®</sup>



## Proclear 1 day sphere specifications

Material/ H <sub>2</sub> O Content	Base Curve (mm)	Dia (mm)	Sphere Power	Wearing Schedule	Dk/t (at -3.00D)	Revenue Carton Size
omafilcon A / 60%	8.7	14.2	+8.00 to -12.00 (0.50D steps after -6.00 and +5.00)	Daily Disposable	36.6	90-pack and 30-pack

A decorative graphic in the top-left corner of the slide, consisting of numerous overlapping circles in various colors including blue, green, yellow, orange, and red. The circles vary in size and are arranged in a pattern that suggests movement or a trail.

# Proclear<sup>®</sup> 1 day multifocal



CooperVision<sup>®</sup>

# Why is Proclear® 1 day multifocal right for you?

Meeting the needs for you and your presbyopic patients.

## Simplicity

“ Easy to fit multifocal lens that delivers a high success rate ”

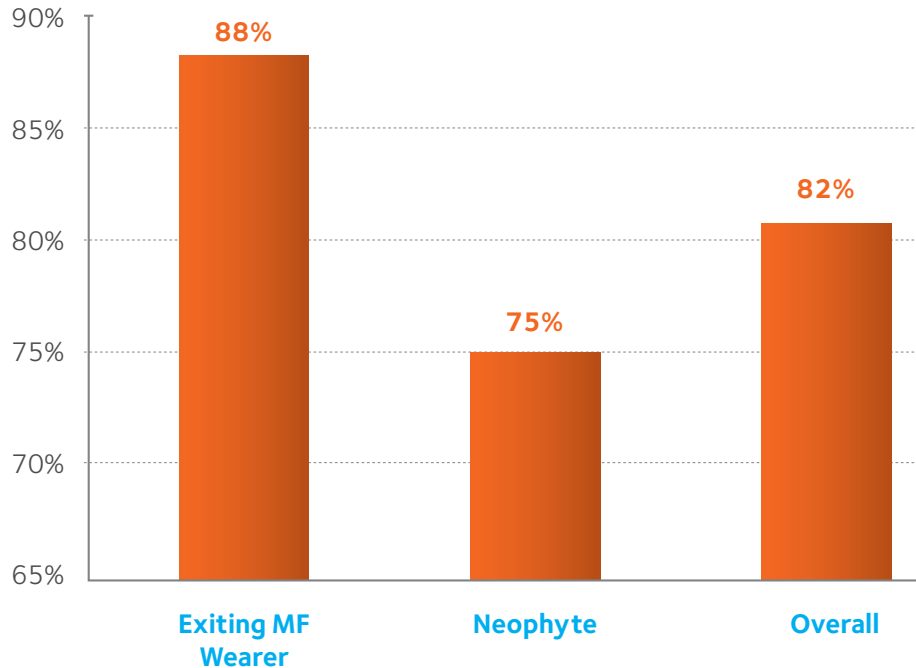
---

“ Easy patient adaptation through different stages of presbyopia. ”



# Tangible Results For You

A great source for patient referrals



**77%**  
of wearers would recommend  
Proclear 1 day multifocal to  
their friends and colleagues



# Meeting The Needs For You And Your Presbyopic Patients

Proclear 1 day is also available in multifocal to meet the growing number of presbyopic patients in your practice.

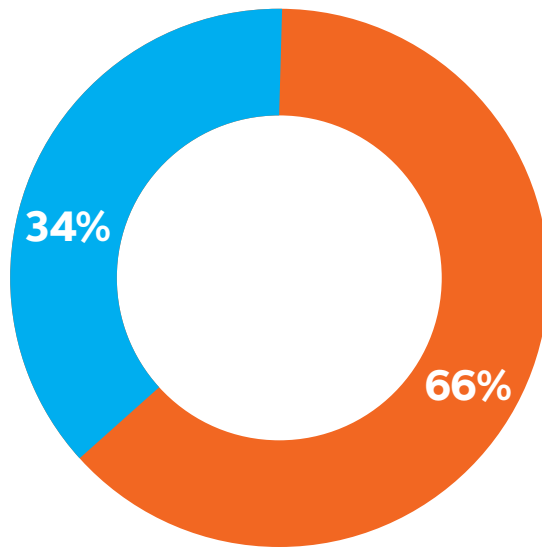
## Excellent Vision From Any Distance

- Center-near aspheric design
- Designed with a single power profile
  - » *Preserves distance vision and limits visual compromise*
- Near boost in the non-dominant eye
  - » *Optimizes near and intermediate vision and maintains binocularity*
- Accommodates patients up to +2.50 ADD



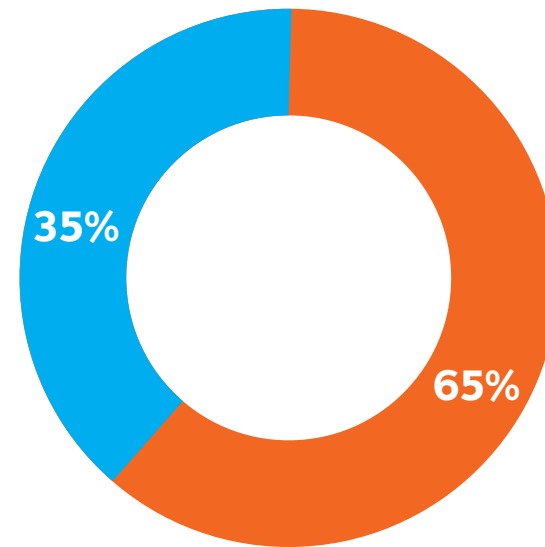
# Tangible Results For Your Patients

Vision Preference



ProcLEAR 1 day multifocal  
Habitual Lens

Comfort Preference



ProcLEAR 1 day multifocal  
Habitual Lens

# Proclear® 1 day multifocal

Why is this lens important to you?

## Presbyopic Patients

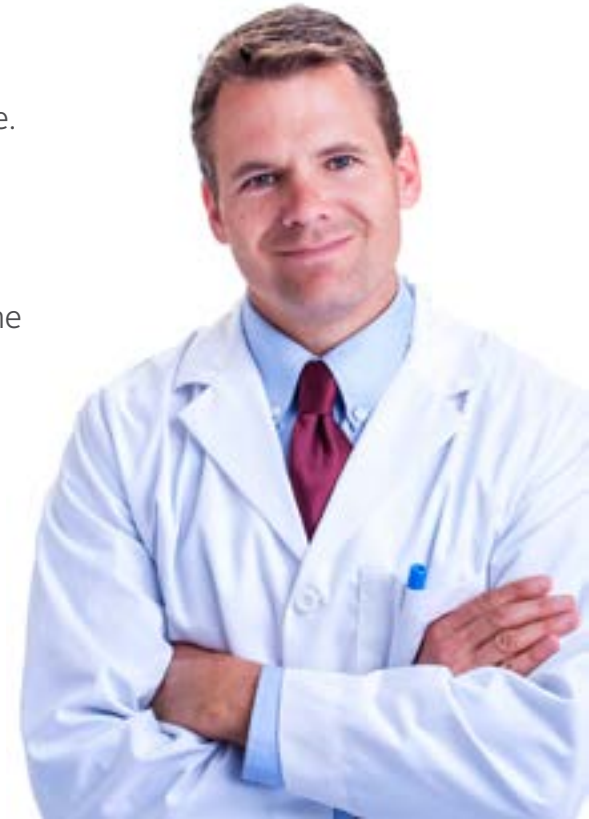
Growing number of 1 day wearers are now becoming presbyopic.

## Part Time Wear

Progressive spectacle wearers who want a 1-day option for occasional use.

## Upgrade 1 Day Monovision

- Proclear 1 day multifocal maintains binocular summation throughout the ADD range to provide better visual performance.
- Improves intermediate vision, night vision, and stereopsis.





## Proclear 1 day multifocal specifications

Material/ H <sub>2</sub> O Content	Base Curve (mm)	Dia (mm)	Sphere Power	ADD Power	Design	Wearing Schedule	Dk/t (at -3.00D)	Revenue Carton Size
omafilcon A / 60%	8.7	14.2	+6.00 to -10.00 (0.50D steps after -6.00D)	Single Power Profile	Center near aspheric	Daily Disposable	36.6	90-pack and 30-pack



# BUILD YOUR PRACTICE



CooperVision®

# Most Compliant Modality

